



Error Message (Please following the order to check your data)

1. Check the **folder name** or address where you saved the dataset (**NO blank SPACES**).
2. Check the dataset type is **.CSV file** with variable names in the **first row**.
3. Check the **missing value** and **string** in the dataset.
4. Check the **data sorting** (ID order) in the dataset.



Correct



Error

1 No blank SPACE in dataset name / folder name

The dataset should be saved in a folder, and the folder name **CANNOT** have any **blank SPACES** ().

Error: The data be loaded correctly, but the analysis will be shut down immediately when running the data.



C:\MyData\data_1.csv

	A	B	C	D	E	F
1	ID	Sex_F	Age_C	Exam	HSG	PA_Mean
2	1	1	-1	1	4.6	3.11
3	2	1	-2	0	4.9	5.76
4	3	1	13	1	4.7	3.94
5	4	1	-2	0	4.3	2.9
6	5	1	-1	1	4.7	4.61

	A	B	C	D	E	F
1	ID	Sex_F	Age_C	Exam	HSG	PA_Mean
6	5	1	-1	1	4.7	4.61
7	6	1	-3	0	4.5	3.22
8	7	0	8	1	4.4	6.04
9	8	-99	-99	0	4.5	6.62
10	9	1	-3	1	5.3	5.03

	A	B	C	D	E	F
1	ID	Sex_F	Age_C	Exam	HSG	PA_Mean
2	1	1	-1	1	4.6	3.11
3	2	1	-2	0	4.9	5.76
4	3	1	13	1	4.7	3.94
5	4	1	-2	0	4.3	2.9
6	5	1	-1	1	4.7	4.61



C:\My Data\data 1.csv

	A	B	C	D	E	F
1	1	1	-1	1	4.6	3.11
2	2	1	-2	0	4.9	5.76
3	3	1	13	1	4.7	3.94
4	4	1	-2	0	4.3	2.9
5	5	1	-1	1	4.7	4.61
6	6	1	-3	0	4.5	3.22

	A	B	C	D	E	F
1	ID	Sex_F	Age_C	Exam	HSG	PA_Mean
6	5	1	-1	1	4.7	4.61
7	6	1	-3	0	4.5	3.22
8	7	0	8	1	4.4	6.04
9	8	.	.	0	4.5	6.62
10	9	1	-3	1	5.3	5.03

	A	B	C	D	E	F
1	ID	Sex_F	Age_C	Exam	HSG	PA_Mean
2	1	1	-1	1	4.6	3.11
3	2	1	-2	0	4.9	5.76
4	5	1	13	1	4.7	3.94
5	4	1	-2	0	4.3	2.9
6	3	1	-1	1	4.7	4.61

2 Variable names in the first row

The dataset should be saved as a **.CSV file** with variable names in the **first row**.

Error: The software could not access to correct variable names/labels, and the first row data will be cut.

3 No blank () / Periods (.) / String ('miss') in data

Missing values should **NOT** be **blank ()** or **periods (.)** or **string** in the dataset. All data should be coded as **numeric values** only, except for the first row (variable names).

Error: The data cannot be read correctly, and it will end up to wrong estimates or model crash.

4 Sorted by ID

Data should be sorted ascending or descending by ID number.

Error: The data cannot be read correctly, and it will end up to get wrong estimates or model crash.



Error Message (Please following the order to check your data)

1. Check the **folder name** or address where you saved the dataset (**NO blank SPACES**).
2. Check the dataset type is **.CSV file** with variable names in the **first row**.
3. Check the **missing value** and **string** in the dataset.
4. Check the **data sorting** (ID order) in the dataset.

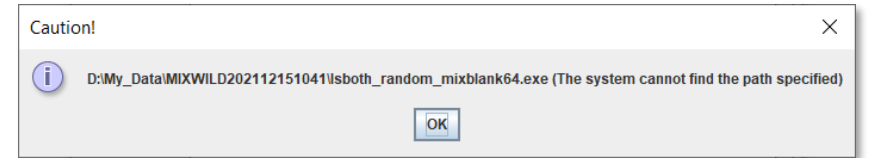
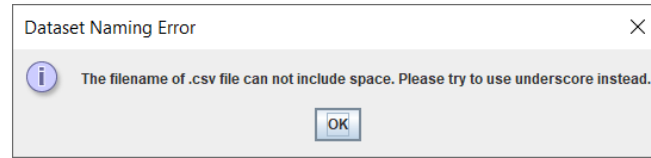


Error Message / Output

1 No blank SPACE in dataset name / folder name

The dataset should be saved in a folder, and the folder name **CANNOT** have any **blank SPACES** ().

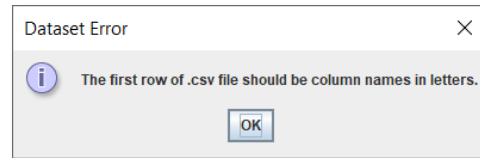
Error: The data be loaded correctly, but the analysis will be shut down immediately when running the data.



2 Variable names in the first row

The dataset should be saved as a **.CSV file** with variable names in the **first row**.

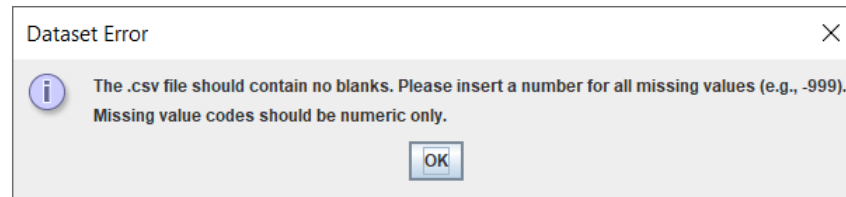
Error: The software could not access to correct variable names/labels, and the first row data will be cut.



3 No blank () / Periods (.) / String ('miss') in data

Missing values should **NOT** be **blank ()** or **periods (.)** or **string** in the dataset. All data should be coded as **numeric values** only, except for the first row (variable names).

Error: The data cannot be read correctly, and it will end up to wrong estimates or model crash.

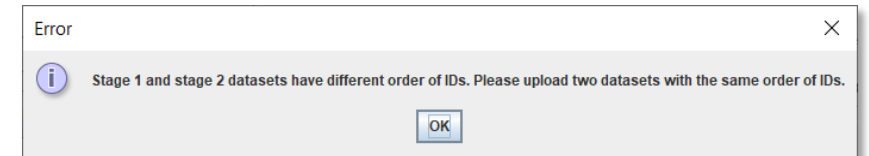
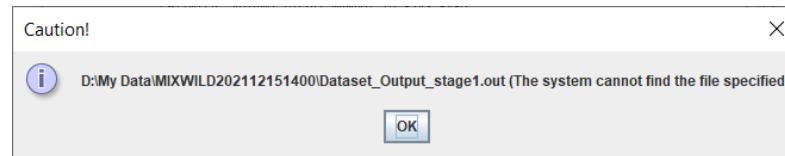


Dependent variable	mean	min	max	std dev
PA	4.2839	1.0000	7.0000	1.5701
Mean model covariates	mean	min	max	std dev
intercept	1.0000	1.0000	1.0000	0.0000
Sex_F	-18.1632	-999.0000	1.0000	136.6949

4 Sorted by ID

Data should be sorted ascending or descending by ID number.

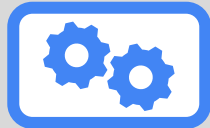
Error: The data cannot be read correctly, and it will end up to get wrong estimates or model crash.





Error Message (Please following the order to check your data)

1. Check the **folder name** or address where you saved the dataset (**NO blank SPACES**).
2. Check the dataset type is **.CSV file** with variable names in the **first row**.
3. Check the **missing value** and **string** in the dataset.
4. Check the **data sorting** (ID order) in the dataset.



More Tips to Help Troubleshooting

Limited variable number (Maximum ≈ 256)

Although there seems to be no limited of the sample size, the capacity of the maximum variable number could potentially be capped. Please keep the dataset as lite as possible and only include the variables that you will use in analysis.

	A	B	C	D	E	F	G	H	I	J	K	L	M	N
1	ID	Day	Sex	Age	Sem	SQ	PhysAct	PA	NA	LGA	Exam	HSG	BDI	
2	1	1	1	22	2	3	30	2.666667	3.666667	2	1	1	4.6	2
3	1	2	1	22	2	3	60	3.333333		3	1	1	4.6	2
4	1	3	1	22	2	3	360	2.666667		4	0	1	4.6	2
5	1	4	1	22	2	3	780	1.333333		5	1	1	4.6	2
6	1	6	1	22	2	3	210		3	4.666667	2	1	4.6	2
7	1	8	1	22	2	3	310		4	3.666667	2	1	4.6	2
8	1	9	1	22	2	3	90	3.333333	3.333333		0	1	4.6	2
9	1	10	1	22	2	3	405	3.333333	2.666667		2	1	4.6	2
10	1	11	1	22	2	3	405	2.333333	2.666667		2	1	4.6	2
11	1	12	1	22	2	3	360		3	4	2	1	4.6	2
12	1	13	1	22	2	3	270	1.666667	5.666667		1	1	4.6	2
13	1	14	1	22	2	3	30	3.333333	2.333333		2	1	4.6	2
14	1	15	1	22	2	3	540	2.666667		2	1	1	4.6	2
15	1	17	1	22	2	2	405	4.333333	3.333333		1	1	4.6	2
16	1	18	1	22	2	3	405	2.666667		3	1	1	4.6	2
17	1	19	1	22	2	3	540	2.666667	3.333333		1	1	4.6	2
18	1	21	1	22	2	3	60	3.666667	2.666667		2	1	4.6	2
19	1	22	1	22	2	3	405	3.333333		3	1	1	4.6	2
20	1	23	1	22	2	3	405	3.333333	3.333333		2	1	4.6	2
21	1	24	1	22	2	2	60	1.666667	4.666667		2	1	4.6	2
22	1	25	1	22	2	3	405		5	2.666667	2	1	4.6	2
23	1	26	1	22	2	3	330	3.666667	2.666667		1	1	4.6	2
24	1	27	1	22	2	3	435		2	3.666667	2	1	4.6	2
25	1	29	1	22	2	3	525	3.666667	2.666667		2	1	4.6	2

Starting your model with a simplified variables/specification

Adding the random slope/scale effect may make your model overly complicated and generate some estimate difficulties. If you experience the model crash issue with no issue above, please try to start your model with simple settings. Also using Probit/Logistic model for dichotomous/ordinal outcome may increase estimate difficulties. Please check your outcomes before doing nonlinear models.

MixWILD-2.0 Model Configuration window showing settings for a dataset and model.

- Dataset:**
 - CSV file path:
 - Title (optional):
 - Does your data contain missing values? Yes No
 - What is your missing data coded as?
- Stage 1 Model:**
 - Stage 1 outcome: Continuous Dichotomous Ordinal
 - Stage 1 regression type: Probit Logistic
 - Specify random location effects: Intercept only Intercept and slope(s)
 - Include estimates of random scale: Yes No
 - Include Stage 2 model: Yes No

Buttons at the bottom: